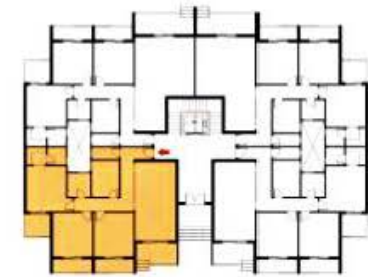


Ground Floor Plan

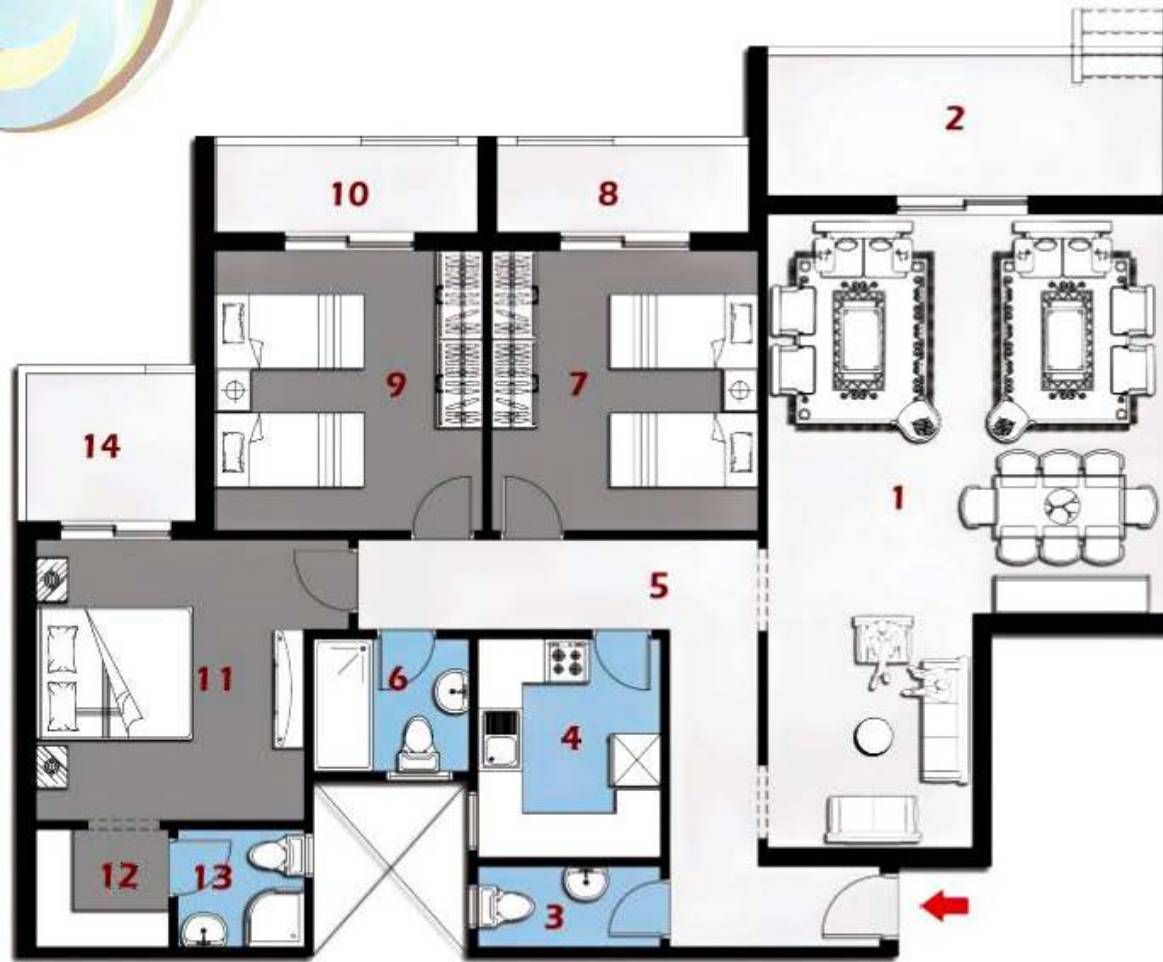


Total Area 140 m

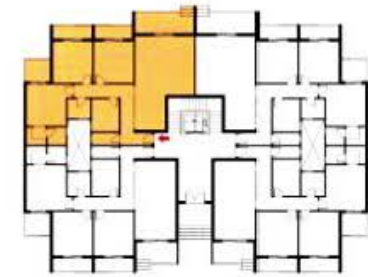
1 - Reception	3.70m x 7.00m
2 - Terrace	2.00m x 3.70m
3 - Bathroom	1.10m x 2.50m
4 - Kitchen	3.20m x 2.50m
5 - Corridor	5.50m x 1.20m
6 - Bathroom	2.00m x 2.10m
7 - Bedroom	4.00m x 3.60m
8 - Terrace	3.55m x 1.30m
9 - Bedroom	4.00m x 3.60m
10 - Terrace	3.55m x 1.30m
11 - Bedroom	4.00m x 3.60m
12 - Dressing	1.60m x 1.80m
13 - Bathroom	1.60m x 1.70m
14 - Terrace	2.40m x 2.10m

Building A

Apartment- A

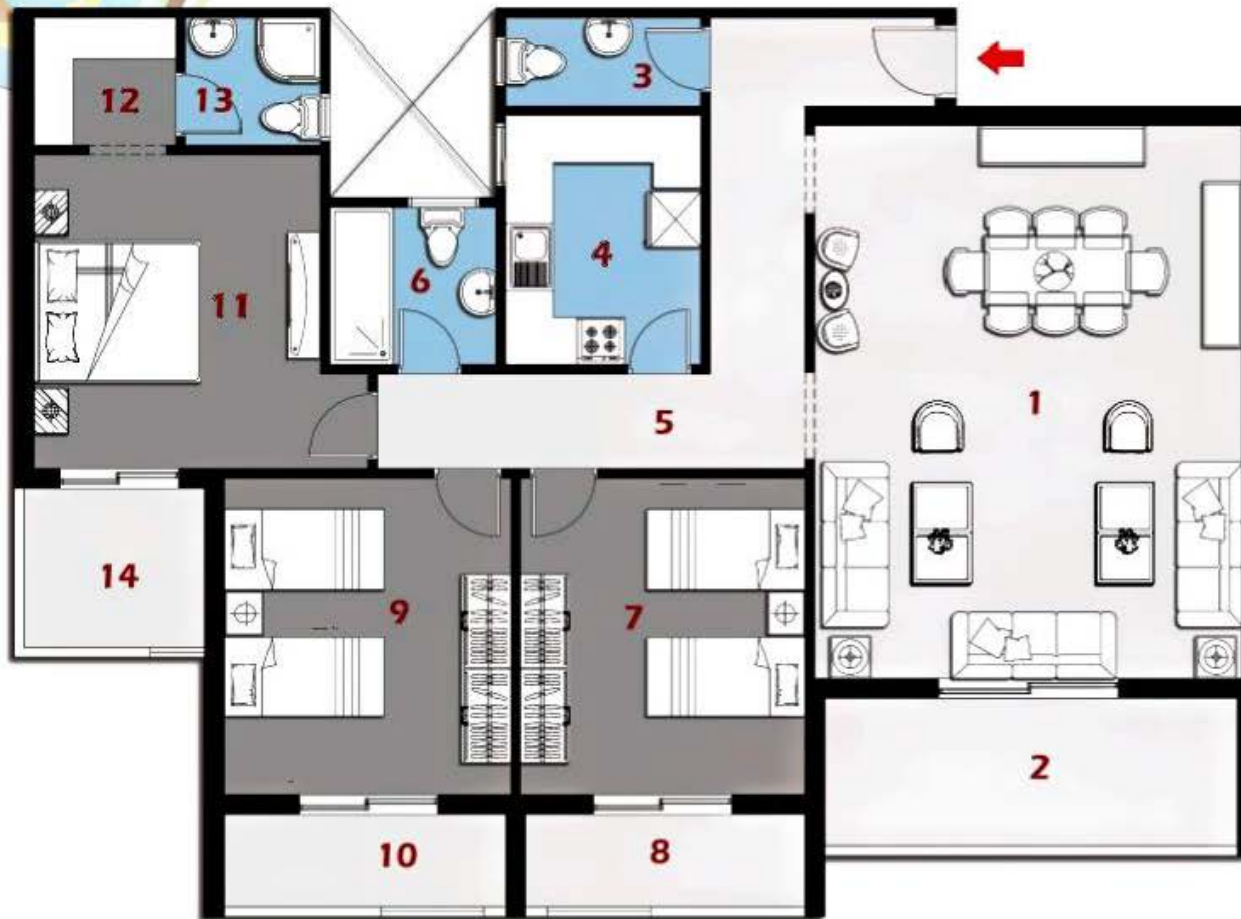


Typical Floor Plan

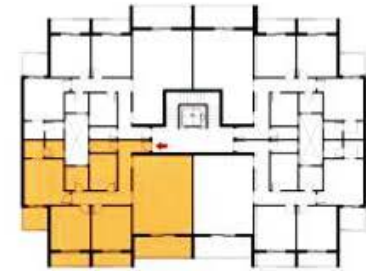


Total Area 150 m

1 - Reception	5.40m x 8.60m
2 - Terrace	2.00m x 5.35m
3 - Bathroom	1.10m x 2.50m
4 - Kitchen	3.00m x 2.50m
5 - Corridor	5.40m x 1.20m
6 - Bathroom	2.00m x 2.10m
7 - Bedroom	3.80m x 3.60m
8 - Terrace	3.40m x 1.30m
9 - Bedroom	3.80m x 3.60m
10 - Terrace	3.55m x 1.30m
11 - Bedroom	3.80m x 3.60m
12 - Dressing	1.60m x 1.80m
13 - Bathroom	1.60m x 1.70m
14 - Terrace	2.40m x 2.10m

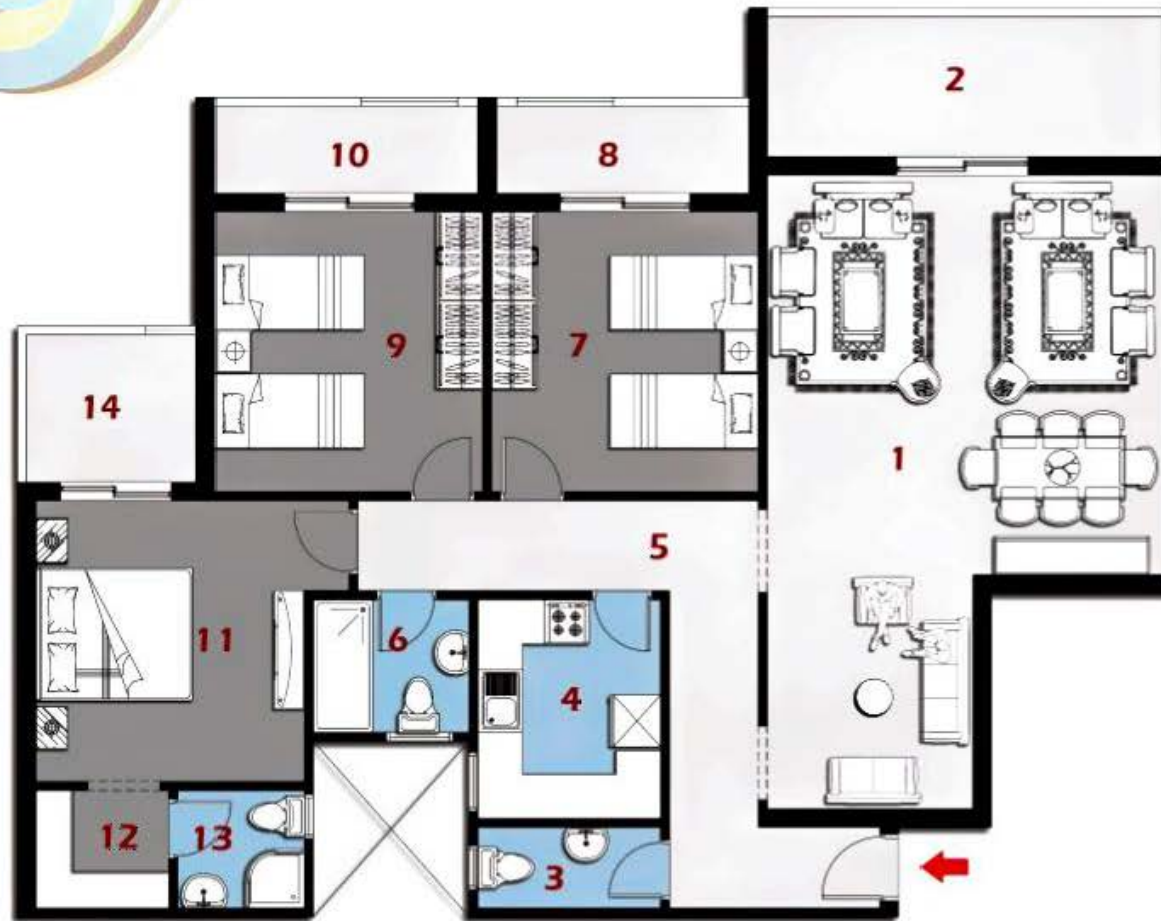


Typical Floor Plan



Total Area 155 m

1 - Reception	5.40m x 7.00m
2 - Terrace	2.00m x 5.20m
3 - Bathroom	1.10m x 2.50m
4 - Kitchen	3.20m x 2.50m
5 - Corridor	5.40m x 1.20m
6 - Bathroom	2.00m x 2.10m
7 - Bedroom	4.00m x 3.60m
8 - Terrace	3.55m x 1.30m
9 - Bedroom	4.00m x 3.60m
10 - Terrace	3.55m x 1.30m
11 - Bedroom	4.00m x 3.60m
12 - Dressing	1.60m x 1.80m
13 - Bathroom	1.60m x 1.70m
14 - Terrace	2.40m x 2.10m



Typical Floor Plan



Total Area 150 m

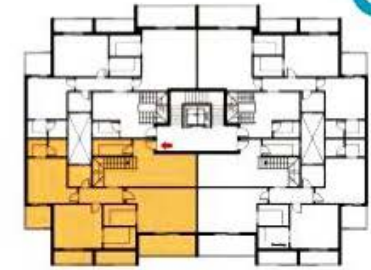
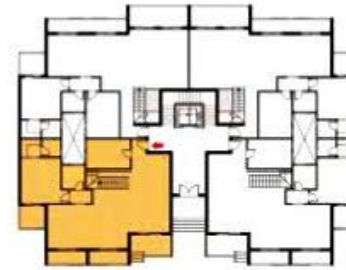
1 - Reception	5.40m x 8.60m
2 - Terrace	2.00m x 5.35m
3 - Bathroom	1.10m x 2.50m
4 - Kitchen	3.00m x 2.50m
5 - Corridor	5.40m x 1.20m
6 - Bathroom	2.00m x 2.10m
7 - Bedroom	3.80m x 3.60m
8 - Terrace	3.40m x 1.30m
9 - Bedroom	3.80m x 3.60m
10 - Terrace	3.55m x 1.30m
11 - Bedroom	3.80m x 3.60m
12 - Dressing	1.60m x 1.80m
13 - Bathroom	1.60m x 1.70m
14 - Terrace	2.40m x 2.10m

Ground Floor Plan

- 1 - Reception 3.50m x 7.00m
- 2 - Reception 5.40m x 7.35m
- 3 - Terrace 3.70m x 2.00m
- 4 - Terrace 7.35m x 1.30m
- 5 - Kitchen 4.00m x 2.70m
- 6 - Bathroom 2.10m x 2.00m
- 7 - Bedroom 4.00m x 3.60m
- 8 - Dressing 1.60m x 1.80m
- 9 - Bathroom 1.60m x 1.70m
- 10 - Terrace 2.40m x 2.10m

First Floor Plan

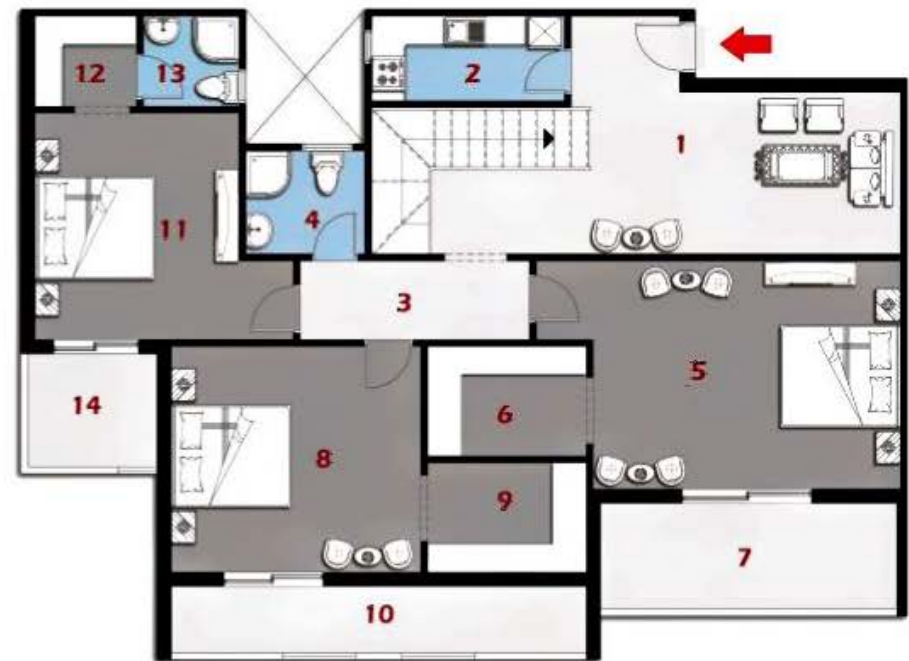
- 1 - Living Area 8.25m x 2.85m
- 2 - Kitchen 3.40m x 1.50m
- 3 - Corridor 4.05m x 1.40m
- 4 - Bathroom 2.10m x 1.80m
- 5 - Bedroom 5.40m x 4.05m
- 6 - Dressing 2.80m x 1.95m
- 7 - Terrace 5.02m x 2.00m
- 8 - Bedroom 4.00m x 4.40m
- 9 - Dressing 2.80m x 1.95m
- 10 - Terrace 7.25m x 1.30m
- 11 - Bedroom 4.00m x 3.60m
- 12 - Dressing 1.60m x 1.80m
- 13 - Bathroom 1.60m x 1.70m
- 14 - Terrace 2.40m x 2.10m



Total Area 295 m



Ground Floor Plan



First Floor Plan

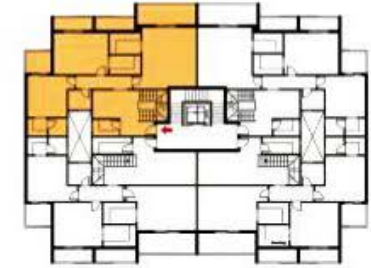
Ground Floor Plan

1 - Reception	5.40m x 12.40m
2 - Corridor	1.20m x 2.80m
3 - Terrace	2.00m x 5.35m
4 - Terrace	1.30m x 7.20m
5 - Kitchen	4.20m x 3.00m
6 - Bathroom	1.80m x 2.10m
7 - Bedroom	3.80m x 3.60m
8 - Dressing	1.70m x 1.80m
9 - Bathroom	1.60m x 1.70m
10 - Terrace	2.40m x 2.10m

First Floor Plan

1 - Living Area	5.65m x 2.85m
2 - Kitchen	2.40m x 1.50m
3 - Corridor	4.95m x 1.20m
4 - Bathroom	2.10m x 1.80m
5 - Bedroom	5.40m x 4.95m
6 - Dressing	2.70m x 1.95m
7 - Terrace	5.30m x 2.00m
8 - Bedroom	4.95m x 3.80m
9 - Dressing	2.70m x 1.75m
10 - Terrace	7.20m x 1.30m

11 - Bedroom	3.80m x 3.60m
12 - Dressing	1.60m x 1.80m
13 - Bathroom	1.60m x 1.70m
14 - Terrace	2.40m x 2.10m



Total Area 300 m



Ground Floor Plan



First Floor Plan

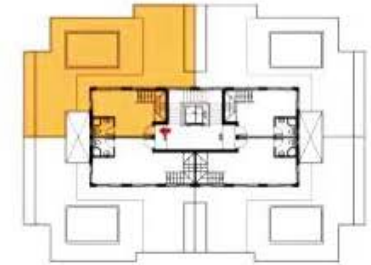
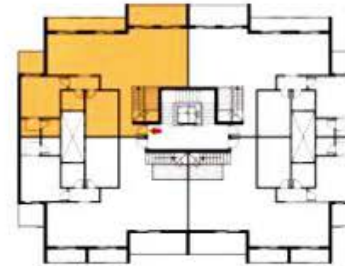
Building A

Duplex - B



6th Floor Plan

- 1 - Reception 5.40m x 12.85m
- 2 - Terrace 5.35m x 2.00m
- 3 - Terrace 7.20m x 1.30m
- 4 - Kitchen 4.00m x 3.00m
- 5 - Bathroom 2.10m x 1.80m
- 6 - Bedroom 3.80m x 3.60m
- 7 - Dressing 1.60m x 1.80m
- 8 - Bathroom 1.60m x 1.70m
- 9 - Terrace 2.40m x 2.10m



**Total Area 340 m
Roof Garden 118 m**



7th Floor Plan

- 1 - Living Area 4.00m x 4.20m
- 2 - Kitchen 1.50m x 2.40m
- 3 - Corridor 4.95m x 1.20m
- 4 - Bathroom 2.10m x 1.80m
- 5 - Bedroom 5.40m x 4.95m
- 6 - Dressing 2.70m x 1.95m
- 7 - Terrace 5.35m x 2.00m
- 8 - Bedroom 3.80m x 4.95m
- 9 - Dressing 2.70m x 1.75m
- 10 - Terrace 7.20m x 1.30m
- 11 - Bedroom 3.80m x 3.60m
- 12 - Dressing 1.60m x 1.80m
- 13 - Bathroom 1.60m x 1.70m
- 14 - Terrace 2.40m x 2.10m



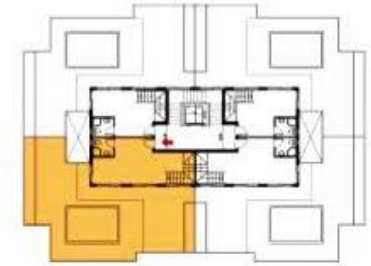
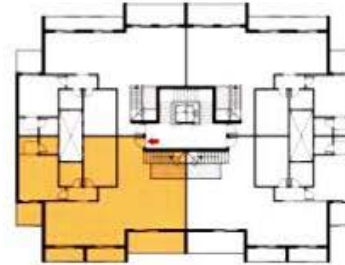
Roof Floor Plan

- 1 - Living Area 4.30m x 5.50m
- 2 - Bathroom 1.70m x 1.90m
- 2 - Swimming Pool 6.00m x 3.50m

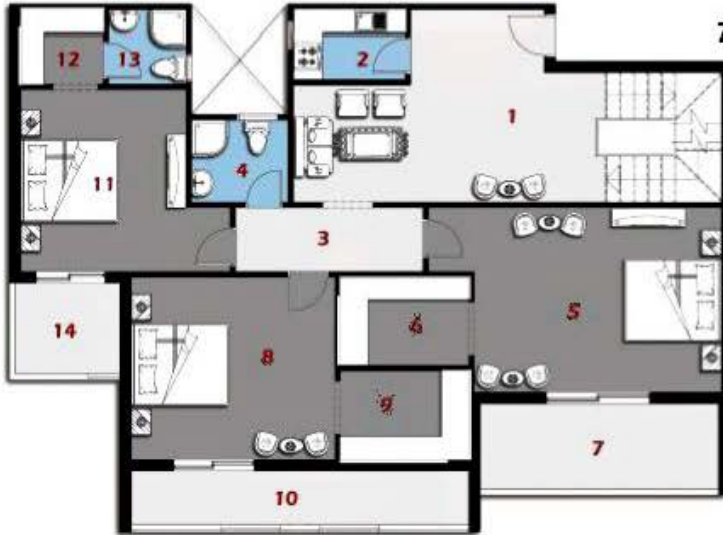


6th Floor Plan

- 1 - Reception 6.20m x 7.00m
- 2 - Reception 4.00m x 17.30m
- 3 - Terrace 5.20m x 2.00m
- 4 - Terrace 7.35m x 1.30m
- 5 - Kitchen 4.40m x 3.00m
- 6 - Bathroom 2.10m x 2.00m
- 7 - Bedroom 4.00m x 3.60m
- 8 - Dressing 1.60m x 1.80m
- 9 - Bathroom 1.60m x 1.70m
- 10 - Terrace 2.40m x 2.10m



Total Area 350 m
Roof Garden 114 m



7th Floor Plan

- 1 - Living Area 6.55m x 4.20m
- 2 - Kitchen 1.50m x 2.40m
- 3 - Corridor 4.05m x 1.40m
- 4 - Bathroom 2.10m x 1.80m
- 5 - Bedroom 5.40m x 4.05m
- 6 - Dressing 2.80m x 1.95m
- 7 - Terrace 5.20m x 2.00m
- 8 - Bedroom 4.00m x 4.05m
- 9 - Dressing 2.80m x 1.75m
- 10 - Terrace 7.35m x 1.30m
- 11 - Bedroom 4.00m x 3.60m
- 12 - Dressing 1.60m x 1.80m
- 13 - Bathroom 1.60m x 1.70m
- 14 - Terrace 2.40m x 2.10m



Roof Floor Plan

- 1 - Living Area 8.10m x 4.25m
- 2 - Bathroom 1.70m x 1.90m
- 2 - Swimming Pool 6.00m x 3.50m

Roof Garden
114 m

Building A

Penthouse Villa - B