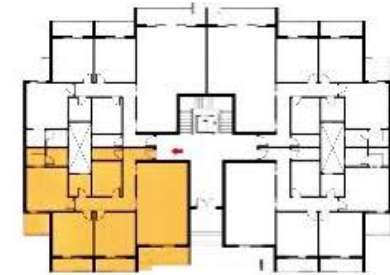


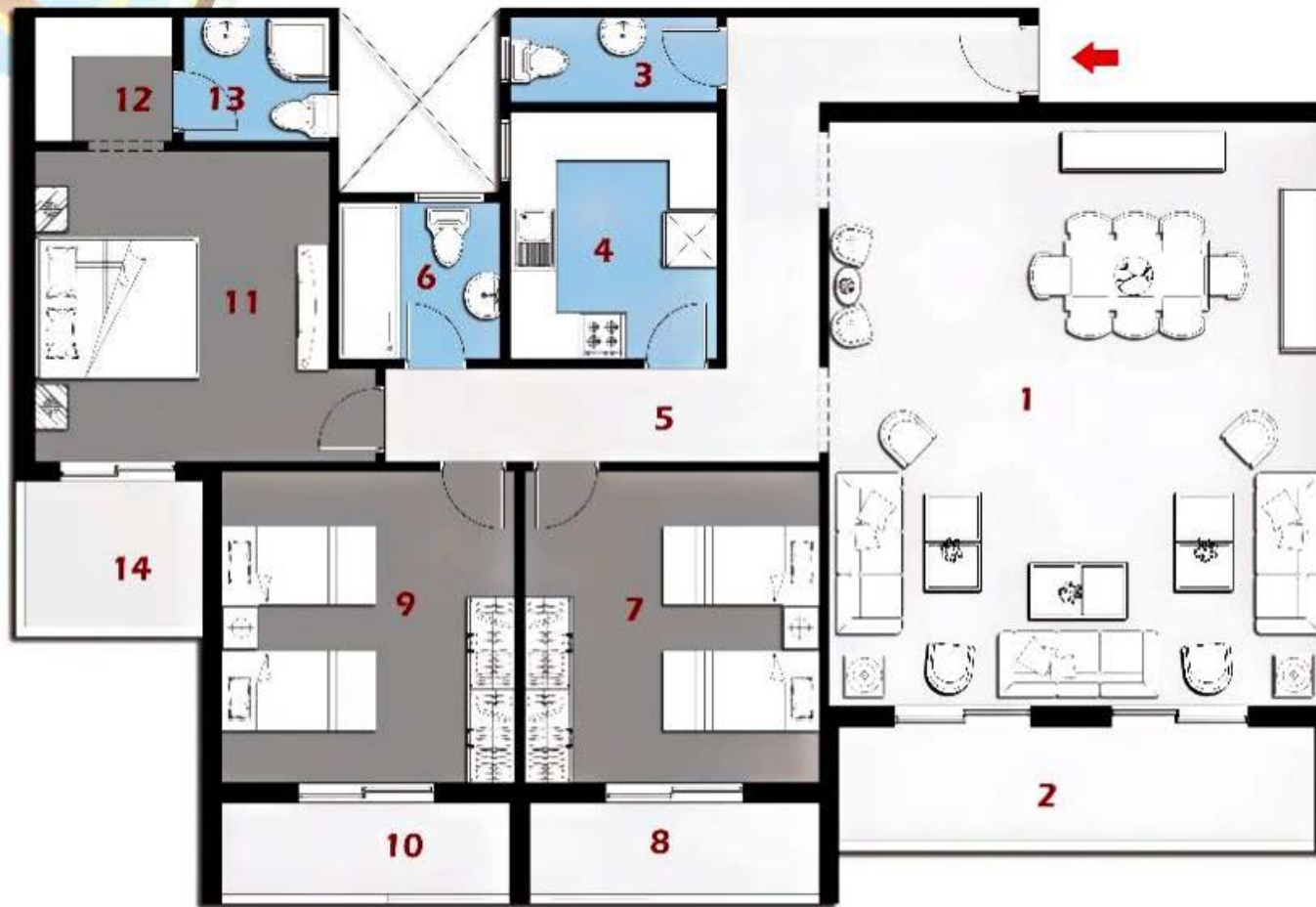


Ground Floor Plan

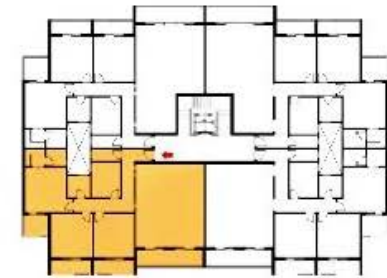


Total Area 156 m

1 - Reception	4.65m x 7.50m
2 - Terrace	1.60m x 4.65m
3 - Bathroom	1.10m x 2.70m
4 - Kitchen	3.20m x 2.70m
5 - Corridor	5.60m x 1.20m
6 - Bathroom	2.00m x 2.10m
7 - Bedroom	4.00m x 3.80m
8 - Terrace	3.75m x 1.30m
9 - Bedroom	4.00m x 3.80m
10 - Terrace	3.75m x 1.30m
11 - Bedroom	4.00m x 3.80m
12 - Dressing	1.60m x 1.80m
13 - Bathroom	1.60m x 1.90m
14 - Terrace	2.40m x 2.00m



Typical Floor Plan



Total Area 170 m

1 - Reception	6.35m x 7.50m
2 - Terrace	1.60m x 6.15m
3 - Bathroom	1.10m x 2.70m
4 - Kitchen	3.20m x 2.70m
5 - Corridor	5.60m x 1.20m
6 - Bathroom	2.00m x 2.10m
7 - Bedroom	4.00m x 3.80m
8 - Terrace	3.75m x 1.30m
9 - Bedroom	4.00m x 3.80m
10 - Terrace	3.75m x 1.30m
11 - Bedroom	4.00m x 3.80m
12 - Dressing	1.60m x 1.80m
13 - Bathroom	1.60m x 1.90m
14 - Terrace	2.40m x 2.00m



Ground Floor Plan



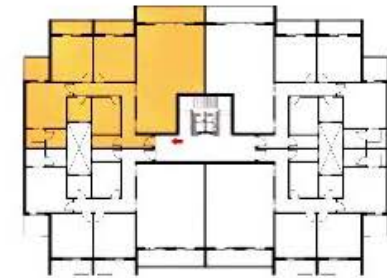
**Total Area 177 m**

<b>1 - Reception</b>	<b>6.35m x 9.50m</b>
<b>2 - Terrace</b>	<b>1.50m x 6.35m</b>
<b>3 - Bathroom</b>	<b>1.10m x 2.70m</b>
<b>4 - Kitchen</b>	<b>3.20m x 2.70m</b>
<b>5 - Corridor</b>	<b>5.60m x 1.20m</b>
<b>6 - Bathroom</b>	<b>2.00m x 2.10m</b>
<b>7 - Bedroom</b>	<b>3.80m x 4.00m</b>
<b>8 - Terrace</b>	<b>3.60m x 1.30m</b>
<b>9 - Bedroom</b>	<b>3.80m x 4.00m</b>
<b>10 - Terrace</b>	<b>3.75m x 1.30m</b>
<b>11 - Bedroom</b>	<b>3.80m x 4.00m</b>
<b>12 - Dressing</b>	<b>1.60m x 1.80m</b>
<b>13 - Bathroom</b>	<b>1.60m x 1.90m</b>
<b>14 - Terrace</b>	<b>2.40m x 2.00m</b>





Typical Floor Plan



Total Area 177 m

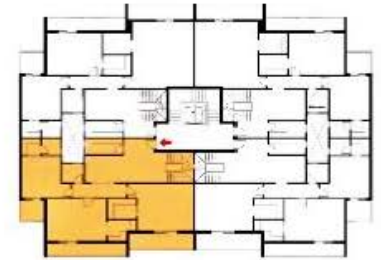
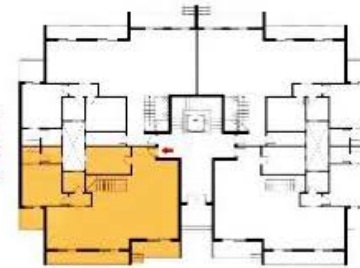
- 1 - Reception 6.35m x 9.50m
- 2 - Terrace 1.50m x 6.35m
- 3 - Bathroom 1.10m x 2.70m
- 4 - Kitchen 3.20m x 2.70m
- 5 - Corridor 5.60m x 1.20m
- 6 - Bathroom 2.00m x 2.10m
- 7 - Bedroom 3.80m x 4.00m
- 8 - Terrace 3.60m x 1.30m
- 9 - Bedroom 3.80m x 4.00m
- 10 - Terrace 3.75m x 1.30m
- 11 - Bedroom 3.80m x 4.00m
- 12 - Dressing 1.60m x 1.80m
- 13 - Bathroom 1.60m x 1.90m
- 14 - Terrace 2.40m x 2.00m

## Ground Floor Plan

1 - Reception	4.45m x 8.85m
2 - Reception	7.75m x 5.60m
3 - Terrace	1.60m x 4.65m
4 - Terrace	1.30m x 7.75m
5 - Kitchen	3.70m x 3.10m
6 - Terrace	2.70m x 4.20m
7 - Bathroom	2.10m x 2.00m
8 - Bedroom	4.00m x 3.80m
9 - Dressing	1.60m x 1.90m
10 - Bathroom	1.90m x 1.90m
10 - Terrace	2.40m x 2.00m

## First Floor Plan

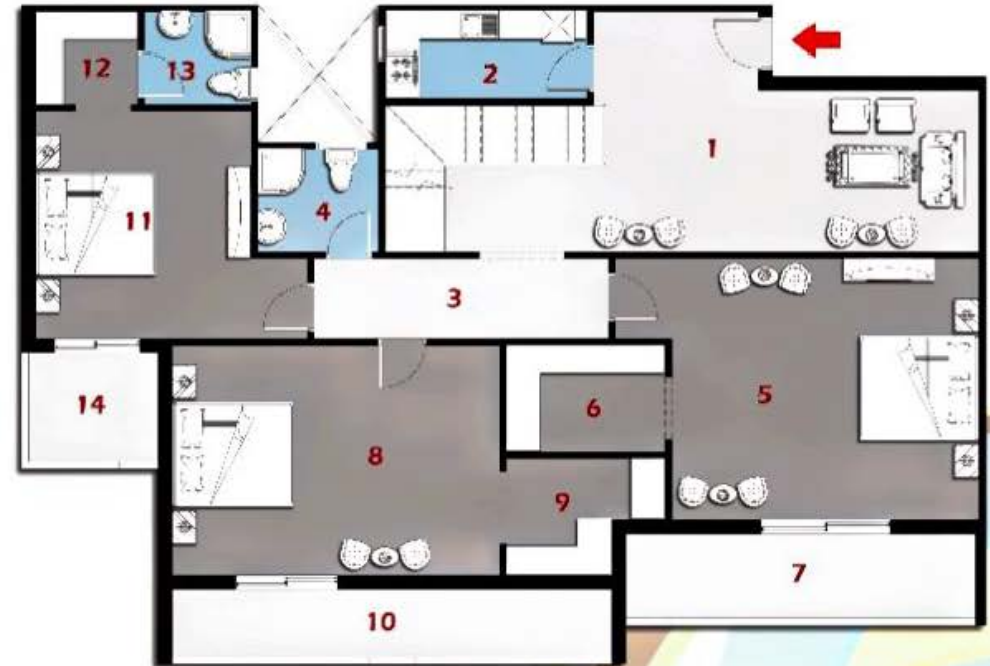
1 - Living Area	9.40m x 4.20m	12 - Dressing	1.60m x 1.80m
2 - Kitchen	3.55m x 1.50m	13 - Bathroom	1.60m x 1.90m
3 - Corridor	5.20m x 1.40m	14 - Terrace	2.40m x 2.00m
4 - Bathroom	2.10m x 1.80m		
5 - Bedroom	5.40m x 5.55m		
6 - Dressing	2.80m x 1.85m		
7 - Terrace	1.60m x 4.65m		
8 - Bedroom	5.75m x 4.00m		
9 - Dressing	2.80m x 2.05m		
10 - Terrace	1.30m x 7.75m		
11 - Bedroom	4.00m x 3.80m		



**Total Area 326 m**



**Ground Floor Plan**



**First Floor Plan**

*Building B*

*Duplex - A*

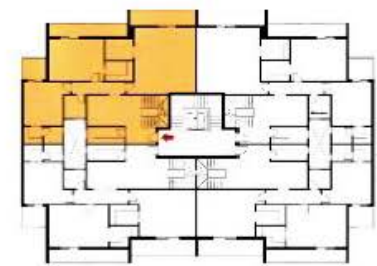
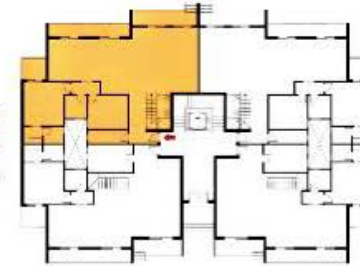


## Ground Floor Plan

1 - Reception	4.50m x 2.80m
2 - Reception	6.35m x 14.20m
3 - Store	3.70m x 1.20m
4 - Kitchen	3.70m x 3.10m
5 - Terrace	6.35m x 1.50m
6 - Terrace	7.60m x 1.30m
7 - Bathroom	2.10m x 1.80m
8 - Bedroom	3.80m x 3.80m
9 - Dressing	1.60m x 1.90m
10 - Bathroom	1.60m x 1.90m
11 - Terrace	2.40m x 2.00m

## First Floor Plan

1 - Living Area	5.20m x 4.40m	12 - Dressing	1.60m x 1.80m
2 - Kitchen	3.55m x 1.50m	13 - Bathroom	1.60m x 1.90m
3 - Corridor	5.15m x 1.40m	14 - Terrace	2.40m x 2.00m
4 - Bathroom	2.10m x 1.80m		
5 - Bedroom	6.15m x 5.90m		
6 - Dressing	2.70m x 2.05m		
7 - Terrace	6.35m x 1.50m		
8 - Bedroom	5.35m x 4.00m		
9 - Dressing	2.80m x 1.95m		
10 - Terrace	7.60m x 1.30m		
11 - Bedroom	3.80m x 3.80m		



**Total Area 354 m**



**Ground Floor Plan**

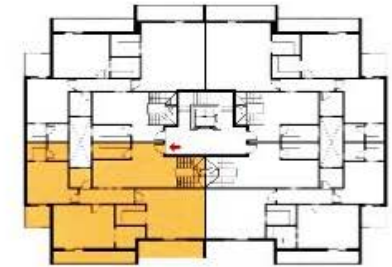
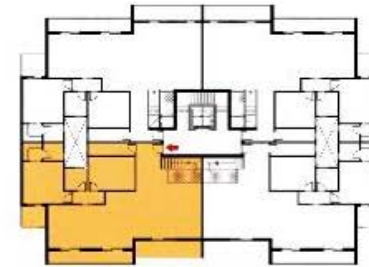


**First Floor Plan**



**6th Floor Plan**

- 1 - Reception 8.85m x 6.45m
- 2 - Reception 7.75m x 5.35m
- 3 - Store 4.20m x 1.20m
- 4 - Kitchen 4.20m x 3.10m
- 5 - Terrace 1.60m x 6.15m
- 6 - Terrace 1.30m x 7.75m
- 7 - Bathroom 2.10m x 2.00m
- 8 - Bedroom 4.00m x 3.80m
- 9 - Dressing 1.60m x 1.80m
- 10 - Bathroom 1.60m x 1.90m
- 11 - Terrace 2.40m x 2.00m



**Total Area 390 m  
Roof Garden 135 m**



**7th Floor Plan**

- 1 - Living Area 7.70m x 4.20m
- 2 - Kitchen 3.55m x 1.50m
- 3 - Corridor 5.20m x 1.40m
- 4 - Bathroom 2.10m x 1.80m
- 5 - Bedroom 5.40m x 4.55m
- 6 - Dressing 2.80m x 1.85m
- 7 - Terrace 1.60m x 6.15m
- 8 - Bedroom 5.75m x 4.00m
- 9 - Dressing 2.80m x 2.05m
- 10 - Terrace 1.30m x 7.75m
- 11 - Bedroom 4.00m x 3.80m
- 12 - Dressing 1.60m x 1.80m
- 13 - Bathroom 1.60m x 1.90m
- 14 - Terrace 2.40m x 2.00m



**Roof Floor Plan**

- 1 - Living Area 9.30m x 4.20m
- 2 - Bathroom 1.90m x 1.70m
- 2 - Swimming Pool 6.00m x 3.50m

*Building B*

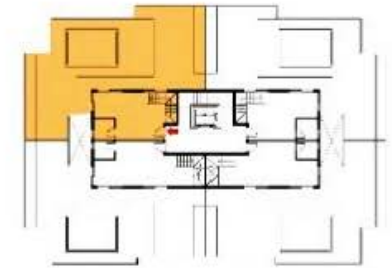
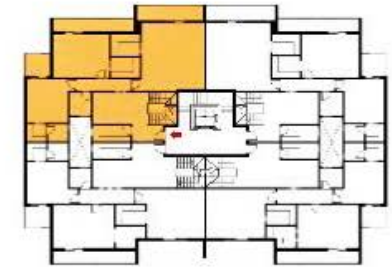
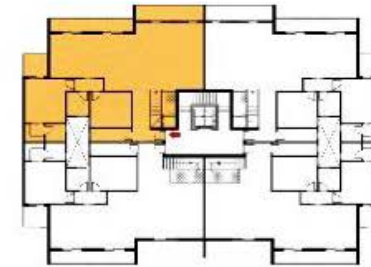
*Penthouse Villa - A*





**6th Floor Plan**

- 1 - Reception 4.50m x 2.80m
- 2 - Reception 6.35m x 14.20m
- 3 - Store 3.70m x 1.20m
- 4 - Kitchen 3.70m x 3.10m
- 5 - Terrace 6.35m x 1.50m
- 6 - Terrace 7.60m x 1.30m
- 7 - Bathroom 2.10m x 1.80m
- 8 - Bedroom 3.80m x 3.80m
- 9 - Dressing 1.60m x 1.80m
- 10 - Bathroom 1.60m x 1.90m
- 11 - Terrace 2.40m x 2.00m



**Total Area 404m**  
**Roof Garden 135 m**



**7th Floor Plan**

- 1 - Living Area 5.20m x 4.40m
- 2 - Kitchen 3.55m x 1.50m
- 3 - Corridor 5.15m x 1.40m
- 4 - Bathroom 2.10m x 1.80m
- 5 - Bedroom 5.60m x 5.90m
- 6 - Dressing 2.70m x 2.05m
- 7 - Terrace 6.35m x 1.50m
- 8 - Bedroom 5.35m x 4.00m
- 9 - Dressing 2.80m x 1.95m
- 10 - Terrace 7.60m x 1.30m
- 11 - Bedroom 3.80m x 3.80m
- 12 - Dressing 1.60m x 1.80m
- 13 - Bathroom 1.60m x 1.90m
- 14 - Terrace 2.40m x 2.00m



**Roof Floor Plan**

- 1 - Living Area 4.50m x 6.70m
- 2 - Bathroom 1.90m x 1.90m
- 2 - Swimming Pool 6.00m x 3.50m

*Building B*

*Penthouse Villa - B*