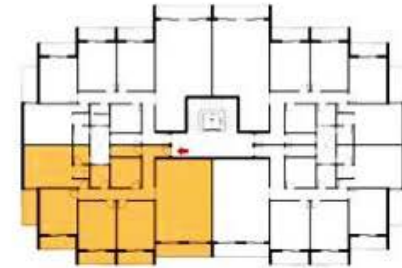


Ground Floor Plan

Total Area 188 m

- 1 - Reception 8.00m x 4.12m
- 2 - Terrace 1.30m x 4.25m
- 3 - Bathroom 1.10m x 3.00m
- 4 - Kitchen 3.00m x 2.80m
- 5 - Corridor 7.50m x 1.10m
- 6 - Bathroom 1.90m x 2.10m
- 7 - Bedroom 4.80m x 3.70m
- 8 - Terrace 3.50m x 1.30m
- 9 - Bedroom 4.80m x 3.70m
- 10 - Terrace 3.65m x 1.30m
- 11 - Bedroom 4.50m x 3.70m
- 12 - Terrace 3.60m x 1.30m
- 13 - Bedroom 4.75m x 4.00m
- 14 - Dressing 1.60m x 1.15m
- 15 - Bathroom 1.60m x 1.80m
- 16 - Terrace 3.60m x 1.60m



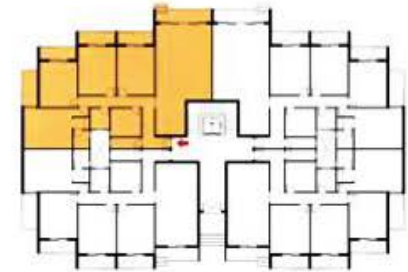
Typical Floor Plan

Total Area 200 m

1 - Reception	8.00m x 5.55m
2 - Terrace	1.30m x 5.50m
3 - Bathroom	1.10m x 3.00m
4 - Kitchen	3.00m x 2.80m
5 - Corridor	7.50m x 1.10m
6 - Bathroom	1.90m x 2.10m
7 - Bedroom	4.80m x 3.70m
8 - Terrace	3.50m x 1.30m
9 - Bedroom	4.80m x 3.70m
10 - Terrace	3.65m x 1.30m
11 - Bedroom	4.50m x 3.70m
12 - Terrace	3.60m x 1.30m
13 - Bedroom	4.75m x 4.00m
14 - Dressing	1.60m x 1.15m
15 - Bathroom	1.60m x 1.80m
16 - Terrace	3.60m x 1.60m



Ground Floor Plan

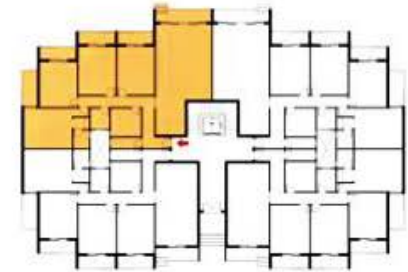


Total Area 211 m

1 - Reception	11.00m x 5.55m
2 - Terrace	1.30m x 5.50m
3 - Bathroom	1.10m x 3.00m
4 - Kitchen	3.00m x 2.80m
5 - Corridor	7.50m x 1.10m
6 - Bathroom	1.90m x 2.10m
7 - Bedroom	4.80m x 3.70m
8 - Terrace	3.50m x 1.30m
9 - Bedroom	4.80m x 3.70m
10 - Terrace	3.65m x 1.30m
11 - Bedroom	4.50m x 3.70m
12 - Terrace	3.60m x 1.30m
13 - Bedroom	4.75m x 4.00m
14 - Dressing	1.60m x 1.15m
15 - Bathroom	1.60m x 1.80m
16 - Terrace	3.60m x 1.60m



Typical Floor Plan



Total Area 211 m

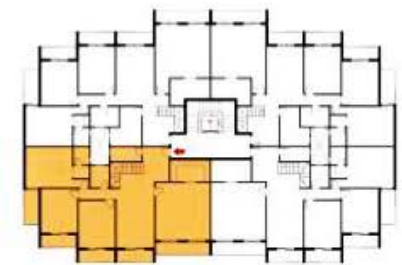
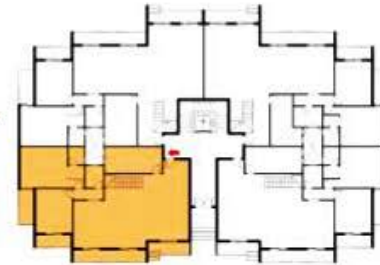
1 - Reception	11.00m x 5.55m
2 - Terrace	1.30m x 5.50m
3 - Bathroom	1.10m x 3.00m
4 - Kitchen	3.00m x 2.80m
5 - Corridor	7.50m x 1.10m
6 - Bathroom	1.90m x 2.10m
7 - Bedroom	4.80m x 3.70m
8 - Terrace	3.50m x 1.30m
9 - Bedroom	4.80m x 3.70m
10 - Terrace	3.65m x 1.30m
11 - Bedroom	4.50m x 3.70m
12 - Terrace	3.60m x 1.30m
13 - Bedroom	4.75m x 4.00m
14 - Dressing	1.60m x 1.15m
15 - Bathroom	1.60m x 1.80m
16 - Terrace	3.60m x 1.60m

Ground Floor Plan

1 - Reception	11.80m x 7.55m
2 - Terrace	1.30m x 4.25m
3 - Terrace	1.30m x 7.45m
4 - Kitchen	2.50m x 5.80m
5 - Bathroom	2.10m x 1.90m
6 - Office	3.70m x 4.50m
7 - Terrace	1.30m x 3.60m
8 - Bedroom	4.00m x 4.75m
9 - Dressing	1.60m x 1.15m
10 - Bathroom	1.60m x 1.80m
11 - Terrace	3.60m x 1.60m

First Floor Plan

1 - Living Area	10.00m x 3.70m	12 - Terrace	3.60m x 1.30m
2 - Kitchen	3.00m x 1.50m	13 - Bedroom	4.00m x 4.75m
3 - Corridor	3.80m x 1.10m	14 - Dressing	1.60m x 1.15m
4 - Terrace	13.50 x 1.30m	15 - Bathroom	1.60m x 1.80m
5 - Bathroom	2.10m x 1.90m	16 - Terrace	3.60m x 1.60m
6 - Bedroom	5.85m x 5.55m		
7 - Dressing	4.05m x 2.00m		
8 - Terrace	5.50m x 1.30m		
9 - Bedroom	4.80m x 3.70m		
10 - Terrace	3.65m x 1.30m		
11 - Bedroom	4.50m x 3.70m		



Total Area 388m



Ground Floor Plan



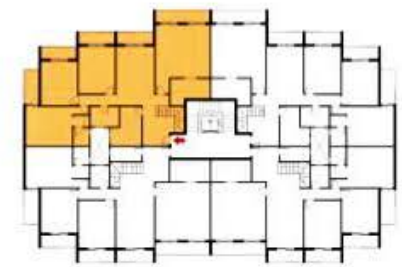
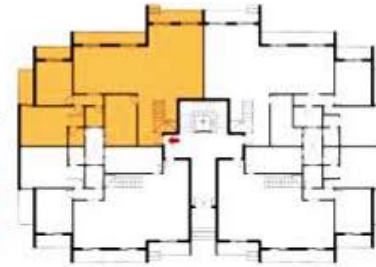
First Floor Plan

Ground Floor Plan

1 - Reception	13.30m x 7.55m
2 - Terrace	1.30m x 5.50m
3 - Terrace	1.30m x 7.40m
4 - Kitchen	3.25m x 5.25m
5 - Bathroom	2.10m x 1.90m
6 - Office	3.70m x 4.50m
7 - Terrace	1.30m x 3.60m
8 - Bedroom	4.00m x 4.75m
9 - Dressing	1.60m x 1.15m
10 - Bathroom	1.60m x 1.80m
11 - Terrace	3.60m x 1.60m

First Floor Plan

1 - Living Area	10.15m x 3.70m	12 - Terrace	3.60m x 1.30m
2 - Kitchen	3.00m x 4.00m	13 - Bedroom	4.00m x 4.75m
3 - Corridor	3.80m x 1.10m	14 - Dressing	1.60m x 1.15m
4 - Terrace	3.50m x 1.30m	15 - Bathroom	1.60m x 1.80m
5 - Bathroom	2.90m x 2.10m	16 - Terrace	3.60m x 1.60m
6 - Bedroom	5.40m x 5.55m		
7 - Dressing	4.05m x 2.70m		
8 - Terrace	5.50m x 1.30m		
9 - Bedroom	4.80m x 3.70m		
10 - Terrace	3.65m x 1.30m		
11 - Bedroom	4.50m x 3.70m		



Total Area 422m



Ground Floor Plan

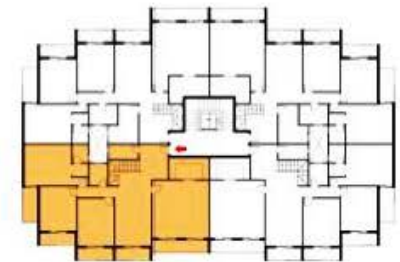
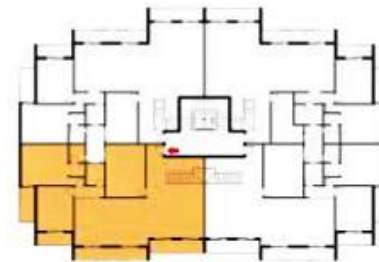


First Floor Plan

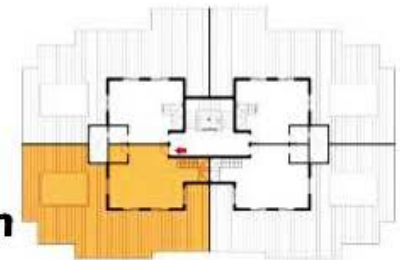


6th Floor Plan

1 - Reception	11.80m x 7.55m
2 - Terrace	1.30m x 4.25m
3 - Terrace	1.30m x 7.45m
4 - Kitchen	2.50m x 5.80m
5 - Bathroom	2.10m x 1.90m
6 - Office	3.70m x 4.50m
7 - Terrace	1.30m x 3.60m
8 - Bedroom	4.00m x 4.75m
9 - Dressing	1.60m x 1.15m
10 - Bathroom	1.60m x 1.80m
11 - Terrace	3.60m x 1.60m



Total Area 450 m
Roof Garden 135 m



7th Floor Plan

1 - Living Area	10.00m x 3.70m
2 - Kitchen	3.00m x 1.50m
3 - Corridor	3.80m x 1.10m
4 - Terrace	13.50 x 1.30m
5 - Bathroom	2.10m x 1.90m
6 - Bedroom	5.85m x 5.55m
7 - Dressing	4.05m x 2.00m
8 - Terrace	5.50m x 1.30m
9 - Bedroom	4.80m x 3.70m
10 - Terrace	3.65m x 1.30m
11 - Bedroom	4.50m x 3.70m
12 - Terrace	3.60m x 1.30m
13 - Bedroom	4.00m x 4.75m
14 - Dressing	1.60m x 1.15m
15 - Bathroom	1.60m x 1.80m
16 - Terrace	3.60m x 1.60m



Roof Floor Plan

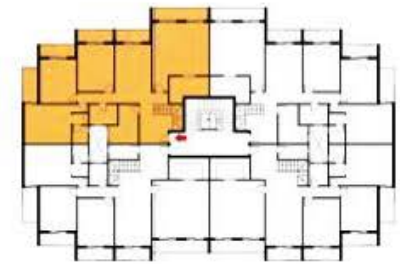
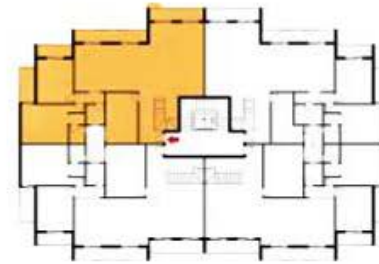
1 - Living Area	9.00m x 6.50m
2 - Bathroom	1.90m x 1.80m
3 - Swimming Pool	6.00m x 3.50m

Roof Garden
135 m



6th Floor Plan

1 - Reception	13.30m x 7.55m
2 - Terrace	1.30m x 5.50m
3 - Terrace	1.30m x 7.40m
4 - Kitchen	3.25m x 5.25m
5 - Bathroom	2.10m x 1.90m
6 - Office	3.70m x 4.50m
7 - Terrace	1.30m x 3.60m
8 - Bedroom	4.00m x 4.75m
9 - Dressing	1.60m x 1.15m
10 - Bathroom	1.60m x 1.80m
11 - Terrace	3.60m x 1.60m



Total Area 472 m
Roof Garden 135 m



7th Floor Plan

1 - Living Area	10.15m x 3.70m
2 - Kitchen	3.00m x 4.00m
3 - Corridor	3.80m x 1.10m
4 - Terrace	3.50m x 1.30m
5 - Bathroom	2.90m x 2.10m
6 - Bedroom	5.40m x 5.55m
7 - Dressing	4.05m x 2.70m
8 - Terrace	5.50m x 1.30m
9 - Bedroom	4.80m x 3.70m
10 - Terrace	3.65m x 1.30m
11 - Bedroom	4.50m x 3.70m
12 - Terrace	3.60m x 1.30m
13 - Bedroom	4.00m x 4.75m
14 - Dressing	1.60m x 1.15m
15 - Bathroom	1.60m x 1.80m
16 - Terrace	3.60m x 1.60m



Roof Floor Plan

1 - Living Area	7.40m x 6.50m
2 - Bathroom	1.90m x 1.80m
3 - Swimming Pool	6.00m x 3.50m

Building C

Penthouse Villa - B